

# VESUVIO EMBOSSING

OUR VESUVIO RANGE IS A SUPER SOFT SPLIT SUEDE USED FOR LUXURY ITEMS WITH THE OPTION OF ADDING BAG TREATMENT, SPECIFIC FOR LEATHER GOODS

Finish	Dyed through
Type	Bovine
Size	Sides
	18 – 22sqft approximately
Thickness	1.2/1.4mm approximately
Country of origin	Italy
Application	Footwear, Bags, Craft + Accessories



FOOTWEAR



BAGS, CRAFT + ACCESSORIES

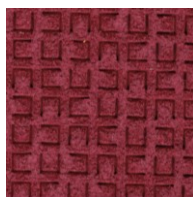
**PLEASE NOTE:** Intent colours are stocked in our overseas warehouse and brought in as requested. Please allow an additional 10 days for items to arrive.



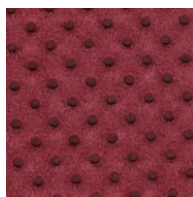
\*\*please use images as guides, for true reference please request a sample or contact one of our reps today\*\*.



atom



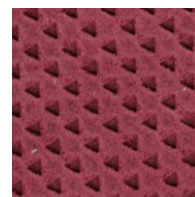
aztec



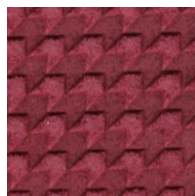
circle



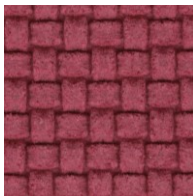
drone



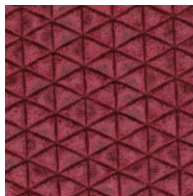
peak



pied de poule



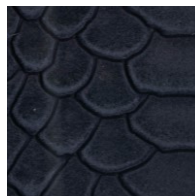
plait



triangle



windmill



anaconda

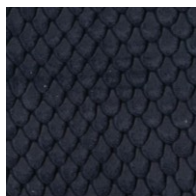
SPECIALTY LEATHERS



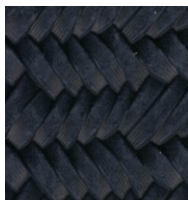
# VESUVIO EMBOSSING

INDENT

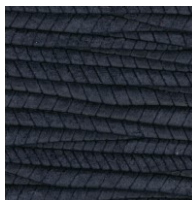
\*\*please use images as guides, for true reference please request a sample or contact one of our reps today\*\*.



aspide



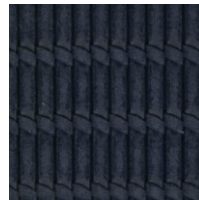
canestrino



corteccia



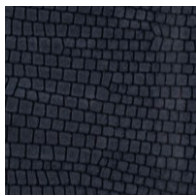
gecko



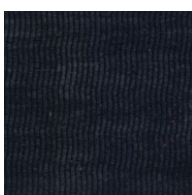
katana



ruffle



sauro



splash

