

LOLLYPOP

SATIN GLOSS PULL UP

14 FASHION COLOURS WITH SATIN GLOSS,
ELEGANT PULL-UP EFFECT IN A SUBSTANCE OF
2.0 - 2.2 MM WITH RESIN BACK

Finish	Satin Gloss Pull Up
Type	Bovine
Size	Double Butts
	1.8 - 2.0sqm approximately
Thickness	2.0/2.2mm approximately
Country of origin	Netherlands
Application	Footwear, Saddlery, Strapping, Bags, Craft + Accessories

PLEASE NOTE: Intent colours are stocked in our overseas warehouse and brought in as requested. Please allow an additional 10 days for items to arrive.



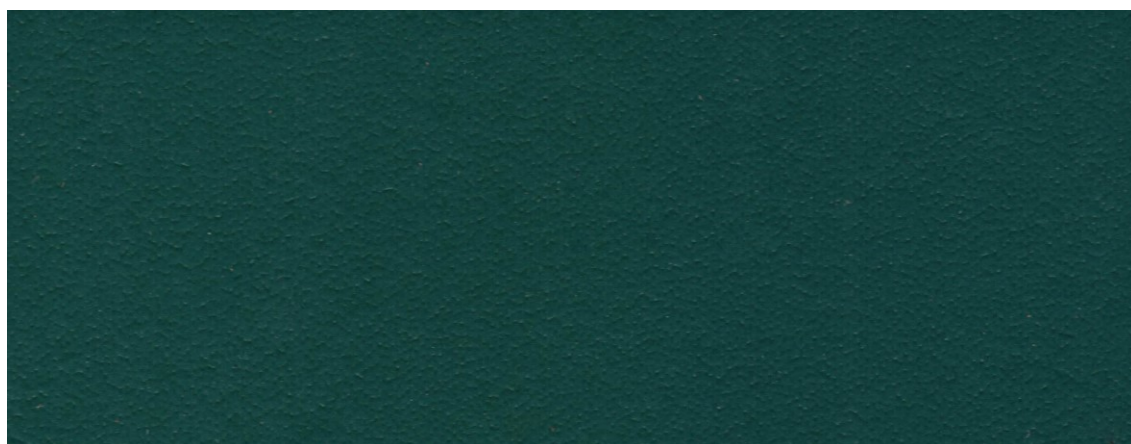
SADDLERY +
STRAPPING



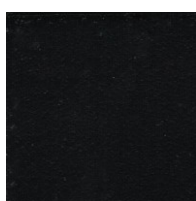
FOOTWEAR



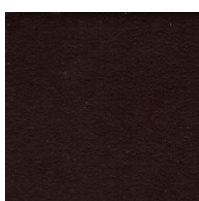
BAGS, CRAFT +
ACCESSORIES



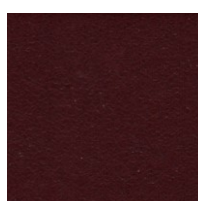
please use images as guides, for true reference please request a sample or contact one of our reps today



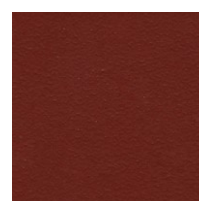
black



cacao



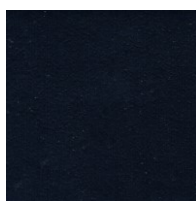
bordo



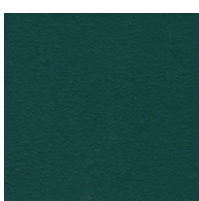
chestnut



vesuvio



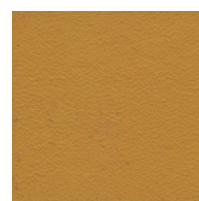
blue



evergreen



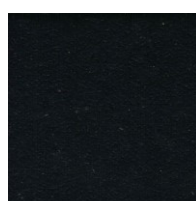
khaki



ochre



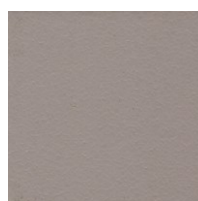
inferno



navy



taupe



grey



white

