

STOCKED

LEURA

NATURAL GRAIN

LEURA is a soft natural grain cow leather ideal for garments, bags and even upholstery. Our superior tannage makes the leather soft but has a good body and full touch.

Finish	Natural Grain
Type	Cow
Size	Sides
	24 – 26 sqft approximately
Thickness	1.2 – 1.4 mm approximately
Country of origin	South Korea
Application	Footwear, Garment, Saddlery, Bag, Craft + Accessories



GARMENT



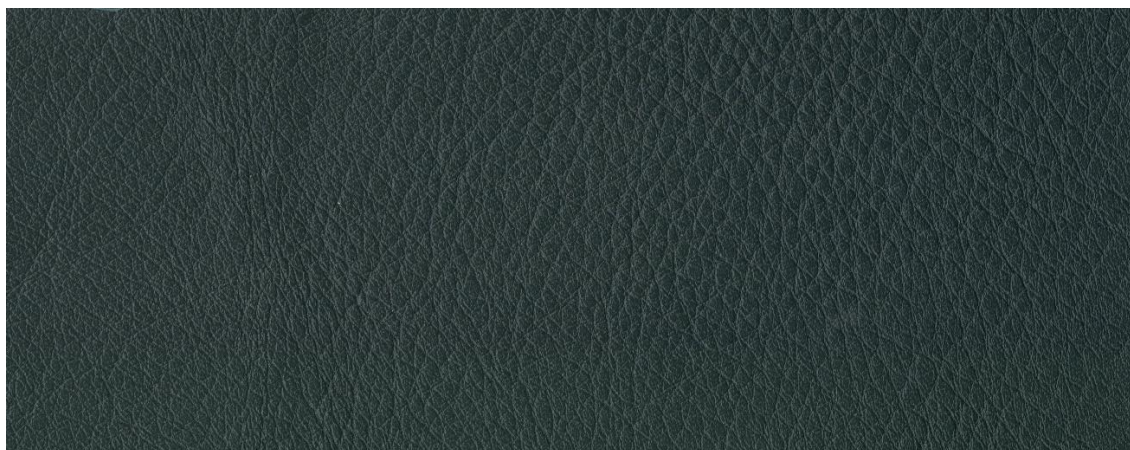
BAGS + CRAFT + ACCESSORIES



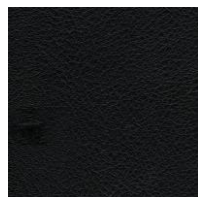
FOOTWEAR



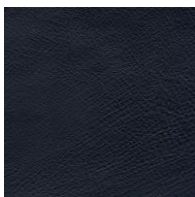
SADDLERY + STRAPPING



please use images as guides, for true reference please request a sample or contact one of our reps today.



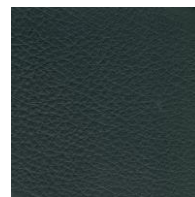
black



navy



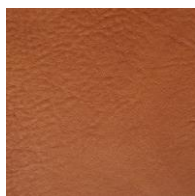
grey



green



pink



tan

SPECIALTY LEATHERS



(02) 4872 2252

www.eccolt.com.au