

# ALTEA

## MILLED PULL UP

**ALTEA CONSISTS OF 32 BASIC AND FASHION COLOURS WITH A MILLED, PULL-UP FINISH IN A SUBSTANCE OF 2.4 - 2.6 MM**

Finish	Milled Pull Up
Type	Bovine
Size	Double Butts
	1.8 – 2.0 sqm approximately
Thickness	2.4/2.6mm approximately
Country of origin	Netherlands
Application	Footwear, Saddlery, Strapping, Bags, Craft + Accessories

**PLEASE NOTE:** Intent colours are stocked in our overseas warehouse and brought in as requested. Please allow an additional 10 days for items to arrive.



SADDLERY + STRAPPING



FOOTWEAR



BAGS, CRAFT + ACCESSORIES



\*\*please use images as guides, for true reference please request a sample or contact one of our reps today\*\*.



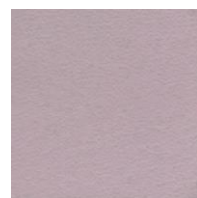
peach



old pink



lavender



dawn



ash



cream



pistachio



aqua



lead



green

\*\*please use images as guides, for true reference please request a sample or contact one of our reps today\*\*.



orange



brick



red



ruby



plum



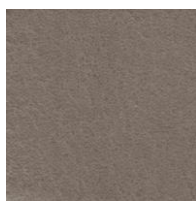
fuchsia



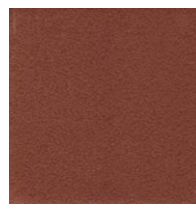
ochre



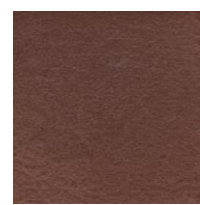
yellow



taupe



chestnut



brown



bordo



navy



cobalt



blue



petrol



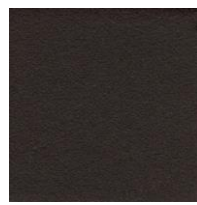
khaki



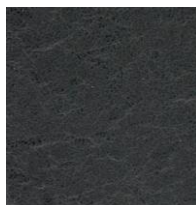
grey



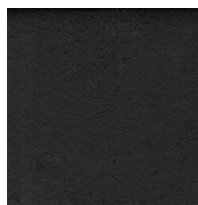
white



cacao



anthracite



black