

VENTO

PULL UP

13 BASIC AND FASHION COLOURS WITH A MILLED, PULL-UP FINISH IN A SUBSTANCE OF 2.8 - 3.0 MM.

Finish	Pull Up
Type	Bovine
Size	Double Butts
Thickness	1.8 – 2.0sqm approximately
Country of origin	2.8/3.0mm approximately
Application	Netherlands
	Footwear, Saddlery, Strapping, Bags, Craft + Accessories



SADDLERY + STRAPPING

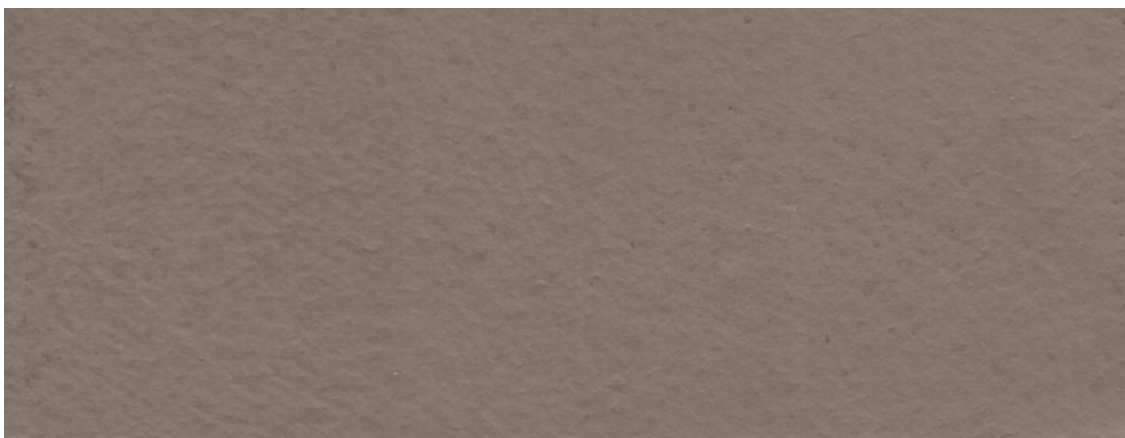


FOOTWEAR

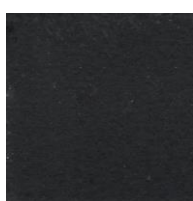


BAGS, CRAFT + ACCESSORIES

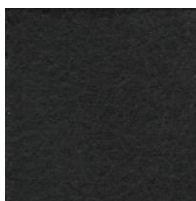
PLEASE NOTE: Intent colours are stocked in our overseas warehouse and brought in as requested. Please allow an additional 10 days for items to arrive.



please use images as guides, for true reference please request a sample or contact one of our reps today.



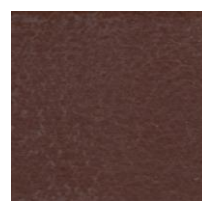
black



dark brown



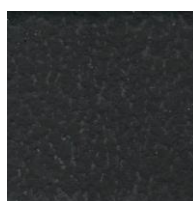
cacao



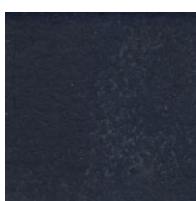
mild brown



chestnut



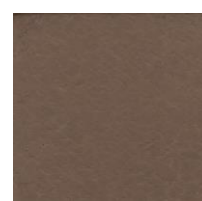
navy



blue



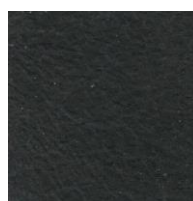
bordo



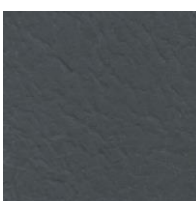
walnut



taupe



dark grey



light grey



white

SPECIALTY LEATHERS



(02) 4872 2252

www.eccol.com.au