

FLORENCE

FULL ANILINE



UPHOLSTERY

INTERNAL
MARINE

FLORENCE is a smooth, aniline leather finished with high quality natural oils and waxes. FLORENCE is a soft article with a slight two tone effect, the possible presence of any imperfections and colour variations are typical for this type of leather as they testify the authenticity and the natural look of pure aniline.

PLEASE NOTE: This leather will scratch and mark very easily but when left alone, the wax and oil will redistribute back to an even look.

TECHNICAL SPECIFICATIONS:

Type	Full Aniline Bull Hide		
Size	4.5 - 4.8sqm approximately		
Thickness	0.9 - 1.1mm		
Country of origin	Italy		
Application	Commercial, Residential + Internal Marine		
Fire Rating & Certification	BS 5852:1979	PASS	
	BS EN 1021-1-2:2006	PASS	
Tear Strength, Single Edge Tear	UNI EN ISO 3377-1	>=20	N
Colour Fastness to Rubbing	UNI EN ISO 11640:1998		
	Dry 50 Cycles	>=3	Grey Scale
	UNI EN ISO 11640:1998		
	Wet 20 Cycles	>=3	Grey Scale
	UNI EN ISO 11640:1998		
	ISO 11641 pH8		
Flexing Endurance	Sweat 20 Cycles	>=3	Grey Scale
	UNI EN ISO 5402		
Colour Fastness to artificial light	UNI EN ISO 105 B02 (MET.5)		
	Exposition energy 16.000kj/sqm	>=3	Blue Scale
Flexing Endurance	UNI EN ISO 5402		
	Dry 50.000 Cycles	No damage	

CARE INSTRUCTIONS:

Protect from direct sunlight, excessive heat and sharp objects. Clean with a damp cloth and do not soak leather with excessive water. Take regular care of your leather by removing any dust with either a vacuum cleaner or damp cloth. Avoid chemical polishes and soap. Polish with a dry cloth.

(02) 4872 2252

www.eccolt.com.au
www.leatheritalia.com.au

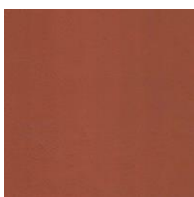
FLORENCE

INDENT

please use images as guides, for true reference please request a sample or contact one of our reps today.



1601 kayak



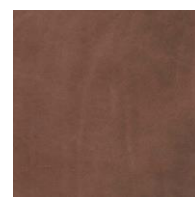
1602 tan



1603 rust



1604 geranio



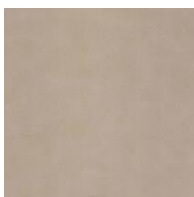
1605 daino



1606 taupe



1614 ash



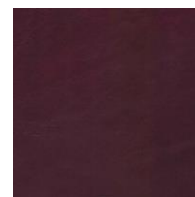
1620 sand



1615 nude



1613 saddie



1608
blackberry



1607 coffee



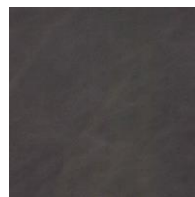
1609 light
sage



1610 spruce



1619 mud



1616 grey



1621 moro



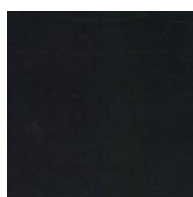
1617 lavagna



1611 ceruleo



1612 nocturne



1618 black ink