

VESUVIO EMBOSSING

our vesuvio range is a super soft split suede used for luxury items with the option of adding bag treatment, specific for leather goods

Finish	Dyed through
Type	Bovine
Size	Sides
	18 – 22sqft approximately
Thickness	1.2/1.4mm approximately
Country of origin	Italy
Application	Footwear, Bags, Craft + Accessories



FOOTWEAR



BAGS, CRAFT + ACCESSORIES

PLEASE NOTE: Intent colours are stocked in our overseas warehouse and brought in as requested. Please allow an additional 10 days for items to arrive.



please use images as guides, for true reference please request a sample or contact one of our reps today.



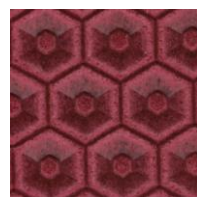
atom



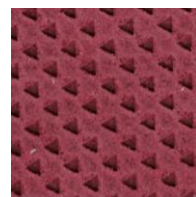
aztec



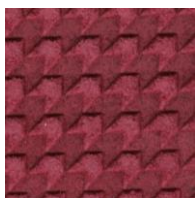
circle



drone



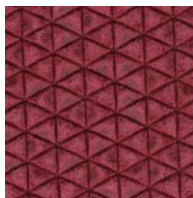
peak



pied de poule



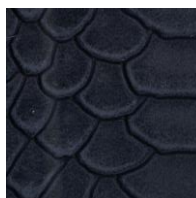
plait



triangle



windmill



anaconda

SPECIALTY LEATHERS



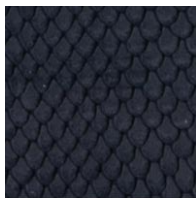
(02) 4872 2252

www.eccolt.com.au

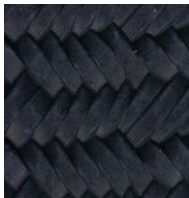
VESUVIO EMBOSSING

INDENT

please use images as guides, for true reference please request a sample or contact one of our reps today.



aspide



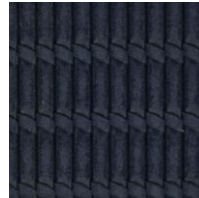
canestrino



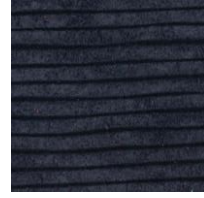
corteccia



gecko



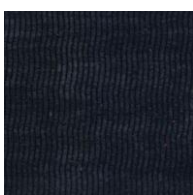
katana



ruffle



sauro



splash



(02) 4872 2252

www.eccolt.com.au