

# TOSCA

## PULL UP

**32 BASIC AND FASHION COLOURS WITH A MILLED, LIGHT PULL-UP FINISH IN A SUBSTANCE OF 2.0 - 2.2 MM. A SPECIAL PROTECTIVE TOP COAT IMPROVES COLOUR FASTNESS AND MAKES THIS ARTICLE MORE RESISTANT TO WATER STAINS**

Finish	Pull Up With Protective Coating
Type	Bovine
Size	Double Butts
Thickness	1.8 - 2.0sqm approximately
Country of origin	2.0/2.2mm approximately
Application	Netherlands
	Footwear, Saddlery, Strapping, Bags, Craft + Accessories



SADDLERY + STRAPPING

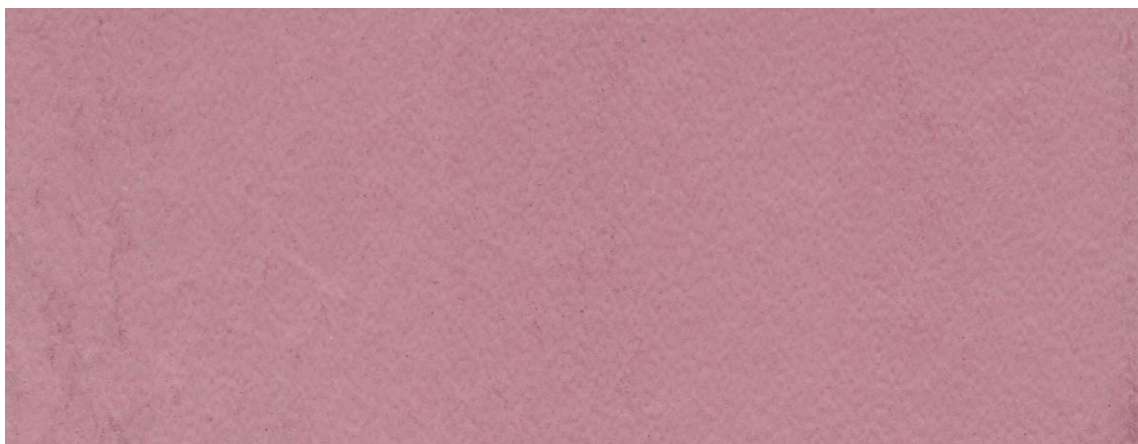


FOOTWEAR



BAGS, CRAFT + ACCESSORIES

**PLEASE NOTE:** Intent colours are stocked in our overseas warehouse and brought in as requested. Please allow an additional 10 days for items to arrive.



\*\*please use images as guides, for true reference please request a sample or contact one of our reps today\*\*.



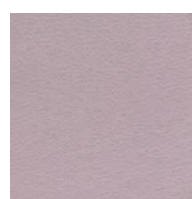
peach



old pink



lavender



dawn



ash



cream



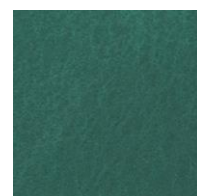
pistachio



aqua



lead



green

\*\*please use images as guides, for true reference please request a sample or contact one of our reps today\*\*.



orange



brick



red



ruby



plum



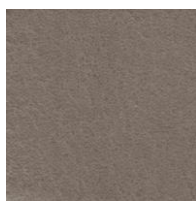
fuchsia



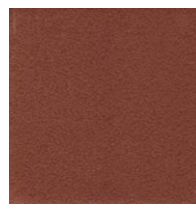
ochre



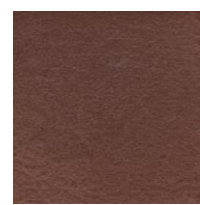
yellow



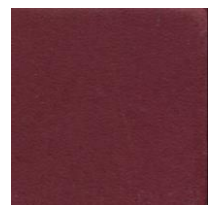
taupe



chestnut



brown



bordo



navy



cobalt



blue



petrol



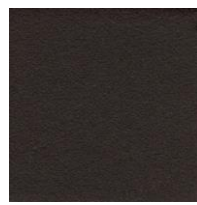
khaki



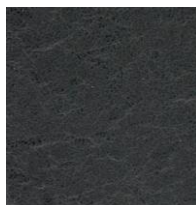
grey



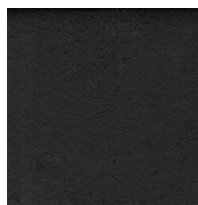
white



cacao



anthracite



black