

ALTEA

MILLED PULL UP

ALTEA CONSISTS OF 32 BASIC AND FASHION COLOURS WITH A MILLED, PULL-UP FINISH IN A SUBSTANCE OF 2.4 - 2.6 MM

Finish	Milled Pull Up
Type	Bovine
Size	Double Butts
	1.8 – 2.0 sqm approximately
Thickness	2.4/2.6mm approximately
Country of origin	Netherlands
Application	Footwear, Saddlery, Strapping, Bags, Craft + Accessories

PLEASE NOTE: Intent colours are stocked in our overseas warehouse and brought in as requested. Please allow an additional 10 days for items to arrive.



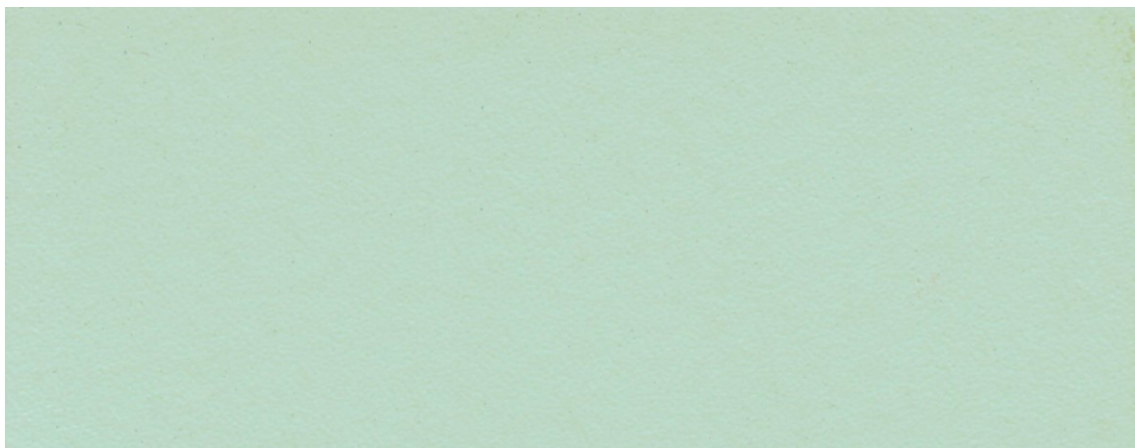
SADDLERY + STRAPPING



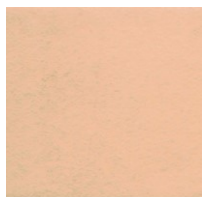
FOOTWEAR



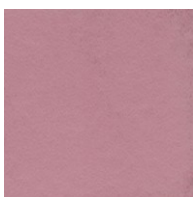
BAGS, CRAFT + ACCESSORIES



please use images as guides, for true reference please request a sample or contact one of our reps today.



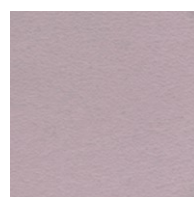
peach



old pink



lavender



dawn



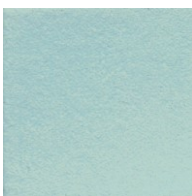
ash



cream



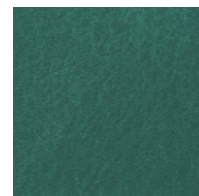
pistachio



aqua



lead



green

please use images as guides, for true reference please request a sample or contact one of our reps today.



orange



brick



red



ruby



plum



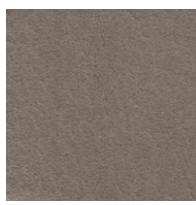
fuchsia



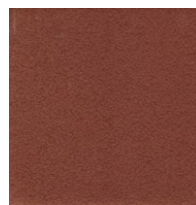
ochre



yellow



taupe



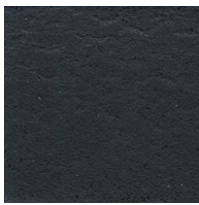
chestnut



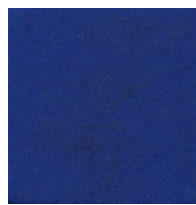
brown



bordo



navy



cobalt



blue



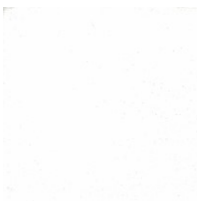
petrol



khaki



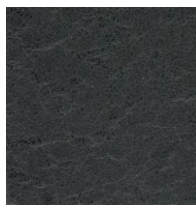
grey



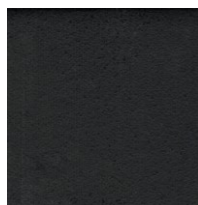
white



cacao



anthracite



black