

# VICENZA

## FULL ANILINE



UPHOLSTERY

INTERNAL  
MARINE

VICENZA is a pure aniline leather with a smooth surface. VICENZA is finished with high quality natural oils and waxes which are drum dyed during the dyeing process which gives the leather a beautiful transparent vegetal tanned look with a slight pull up effect. Some little imperfections and colour variations are typical for this type of leather as they show the purity of the hide.

**PLEASE NOTE:** This leather will scratch and mark very easily but when left alone, the wax and oil will redistribute back to an even look.

### TECHNICAL SPECIFICATIONS:

Type	Full Aniline		
Size	5.0sqm approximately		
Thickness	1.2 - 1.4mm		
Country of origin	Italy		
Application	Commercial, Residential + Internal Marine		
Fire Rating & Certification	BS 5852:1979		PASS
	BS EN 1021-1-2:2006		PASS
Tear Strength, Single Edge Tear	UNI EN ISO 3377-1	>=20	N
Colour Fastness to Rubbing	UNI EN ISO 11640:1998		
	Dry 50 Cycles	>=3	Grey Scale
Flexing Endurance	UNI EN ISO 5402		
	Dry 50.000 Cycles		No damage
Colour Fastness to artificial light	UNI EN ISO 105 B02 (MET.5)		
Exposition energy 16.000kj/sqm		>=2	Blue Scale

### CARE INSTRUCTIONS:

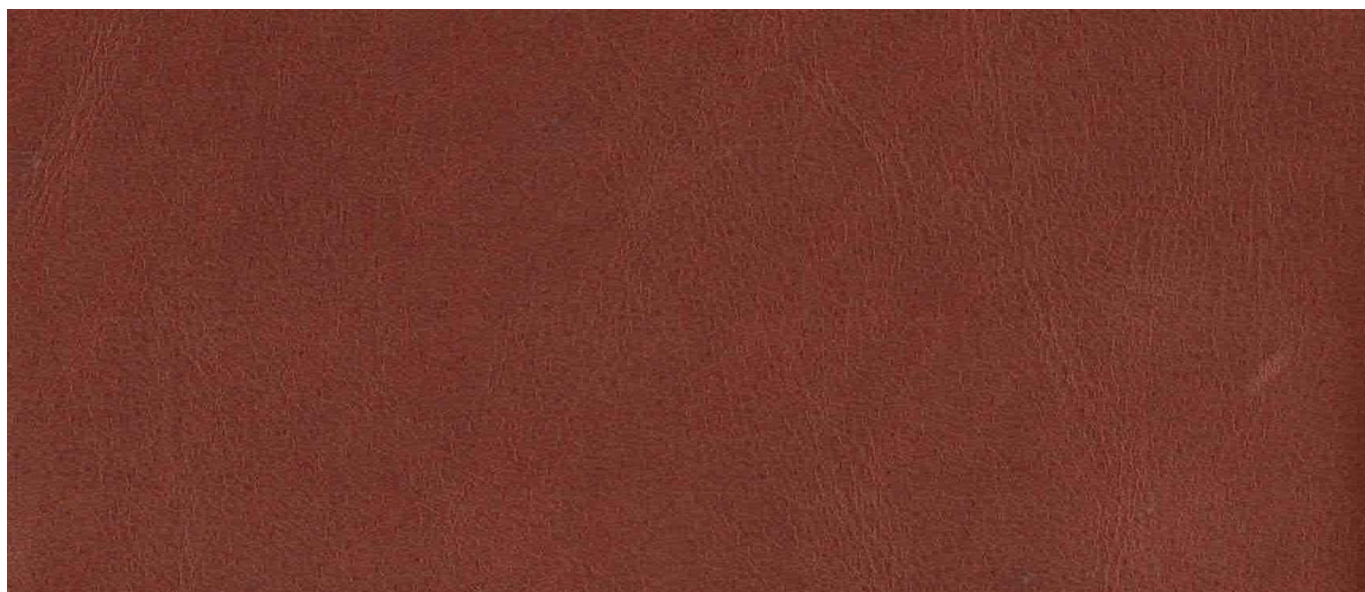
Protect from direct sunlight, excessive heat and sharp objects. Clean with a damp cloth and do not soak leather with excessive water. Take regular care of your leather by removing any dust with either a vacuum cleaner or damp cloth. Avoid chemical polishes and soap. Polish with a dry cloth.

(02) 4872 2252

[www.eccolt.com.au](http://www.eccolt.com.au)

[www.leatheritalia.com.au](http://www.leatheritalia.com.au)

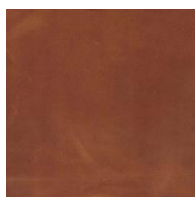
\*\*please use images as guides, for true reference please request a sample or contact one of our reps today\*\*.



1501 saddle



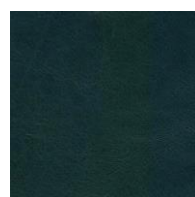
1502 taupe



1503 cognac



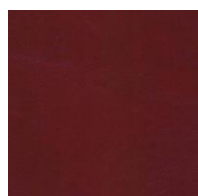
1504 dark  
brown



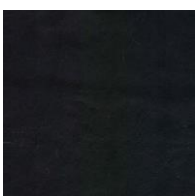
1505 emerald



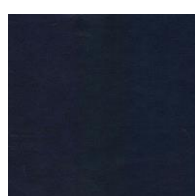
1506 orange



1507 oxblood



1508 black



1509 blue  
nocturne